

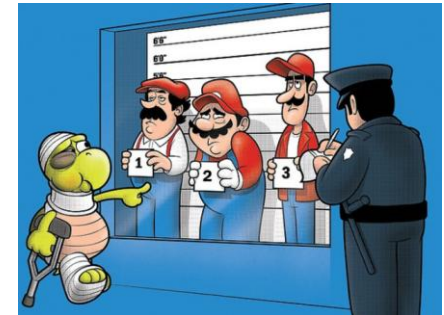
# THE IMPACT OF DATA VISUALIZATION ON CRIME ANALYSIS

by Mina Aryaie



# OUTLINE

- Introduction and key terms
- Why is data visualization important
- History of crime data visualization
- Data visualization in
  1. Crime scene
  2. Police line up
  3. Polygraph
  4. Geographic profiling
- Using data visualization to pinpoint crime by time & location.
- Enhancing justice through effective data visualization
- Visualizing Crime in Canada: Toronto Police and Fraser Institute



# INTRODUCTION



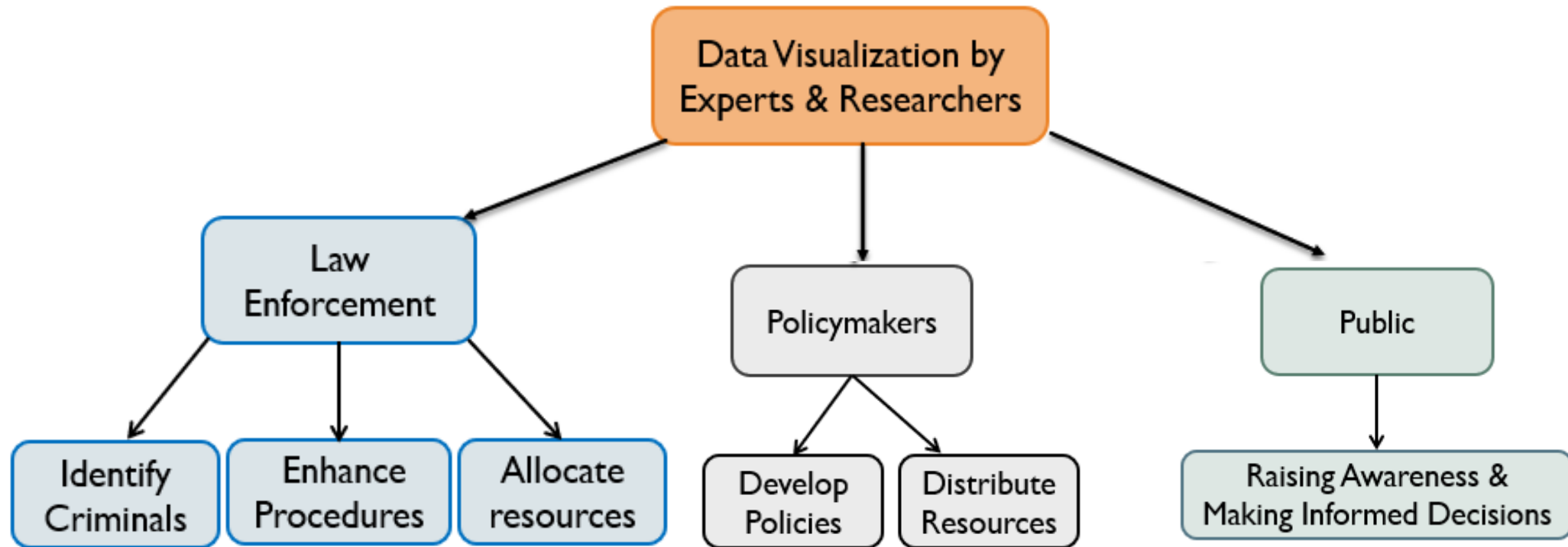
## KEY CONCEPTS

Data visualization is the graphical representation of data using charts, maps, graphs, and other visual formats to reveal patterns, trends, and relationships.

Crime is any act or omission that violates a law and is punishable by the state.



# WHY IS DATA VISUALIZATION IMPORTANT?



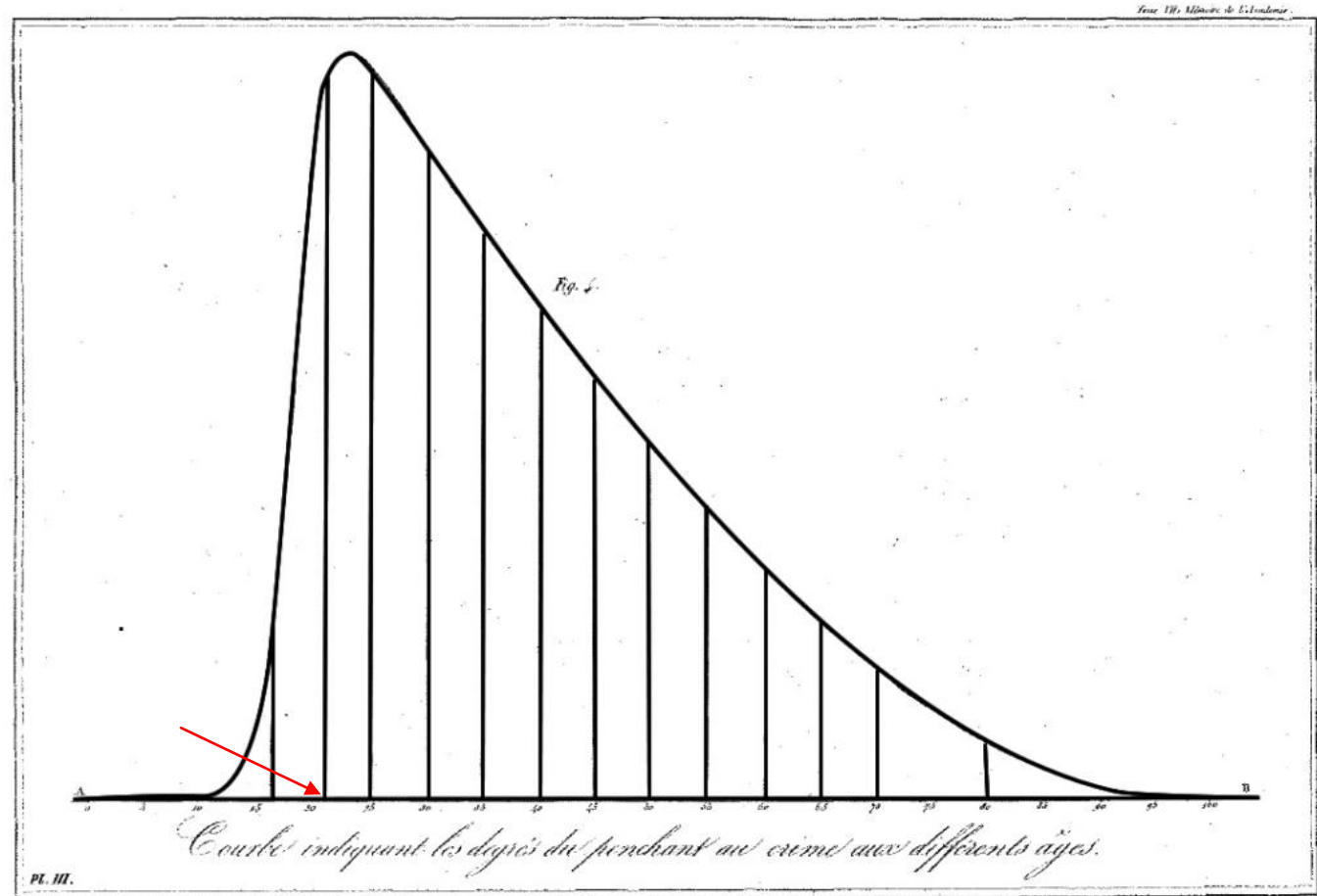
# THE HISTORY OF CRIME DATA VISUALIZATION



# DATA VISUALIZATION IN CRIMINOLOGY

## Adolphe Quetelet

- Studied crime rates in France (1820s–1830s)
- Applied data visualization and statistical methods in criminology

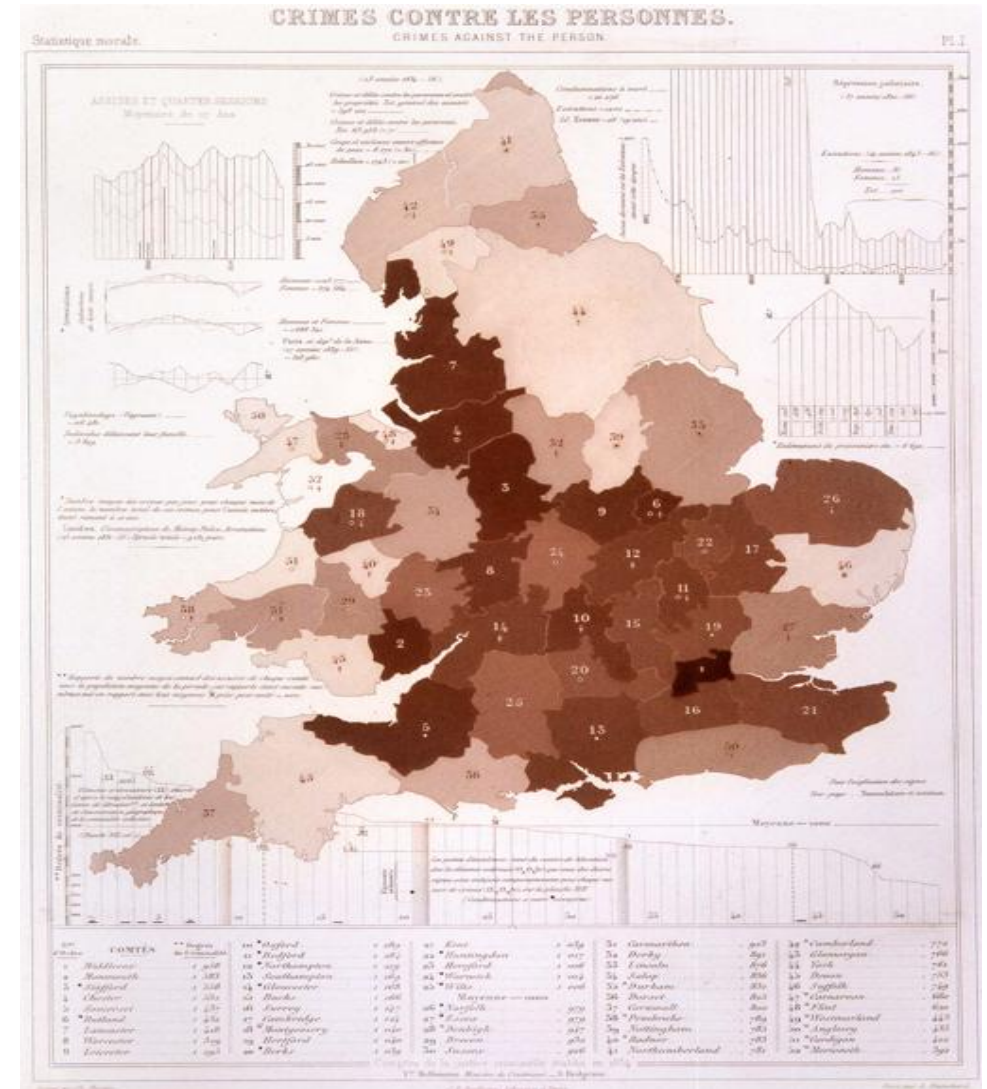


Piers Beirne (1987). "Adolphe Quetelet and the Origins of Positivist Criminology". In; *American Journal of Sociology* 92(5): pp. 1140–1169.



## André-Michel Guerry

- Crimes against persons in England, 1864
- First, thematic maps of crime data

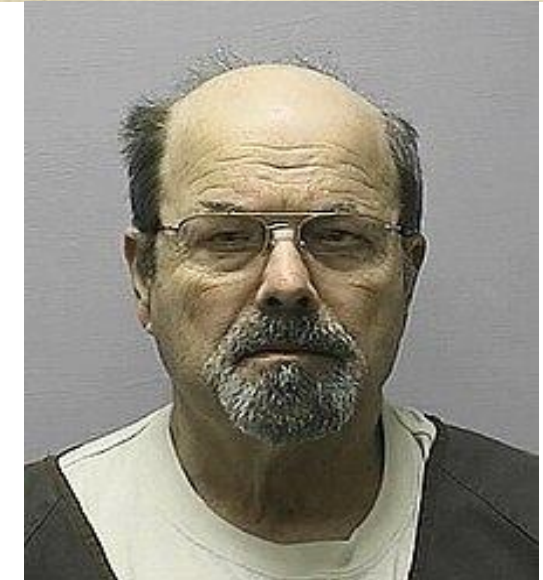


Friendly, (2007). "A.-M. Guerry's Moral Statistics of France: Challenges for Multivariable Spatial Analysis," *Statistical Science*, vol. 22, no. 3. <https://www.datavis.ca/papers/guerry-ST241.pdf>



## Sir William Herschel

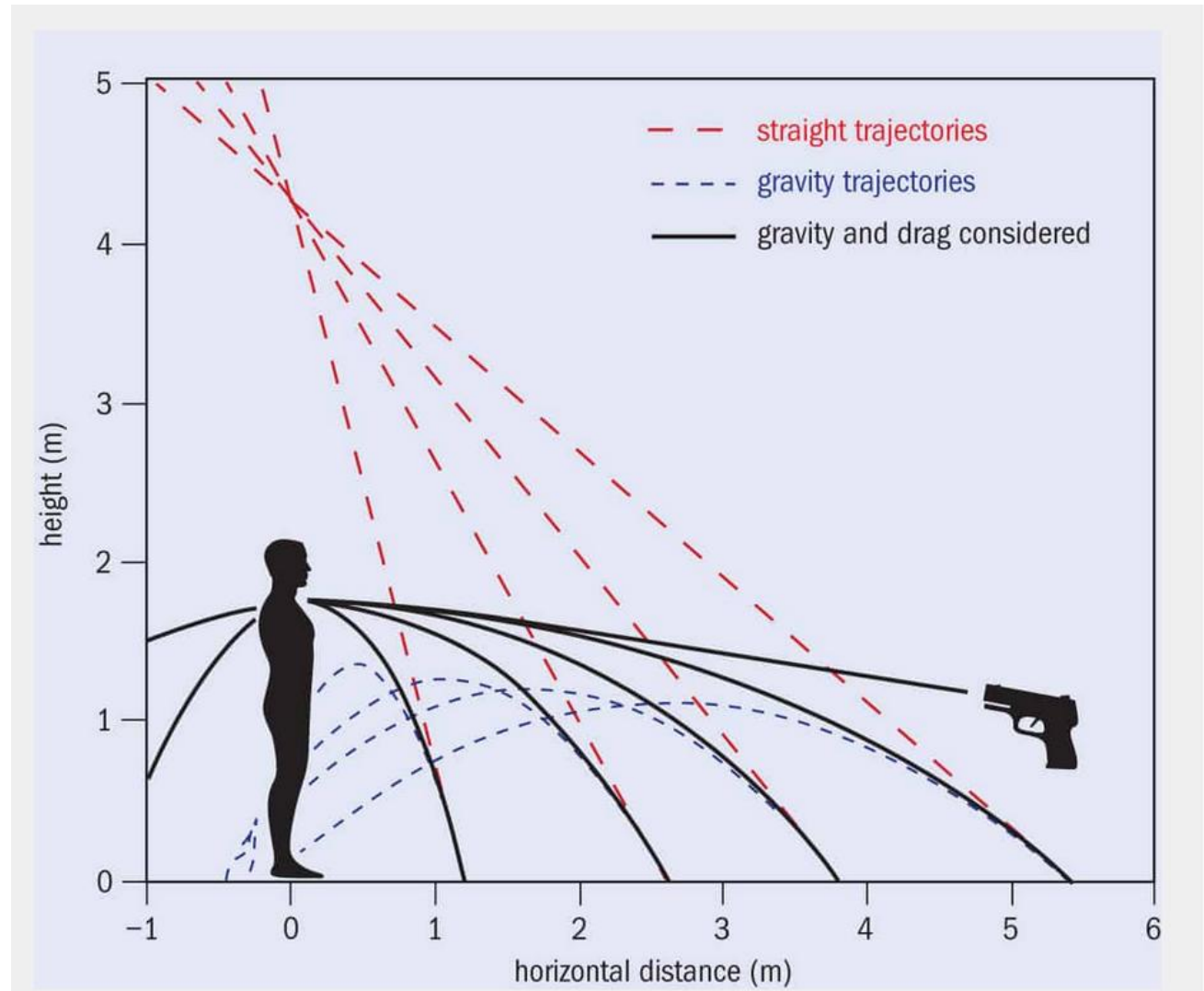
- Recognize fingerprints as unique and permanent
- First fingerprint case (Francisca Rojas, 1892, Argentina)
- BTK Killer (Dennis Rader) was identified using old fingerprint records



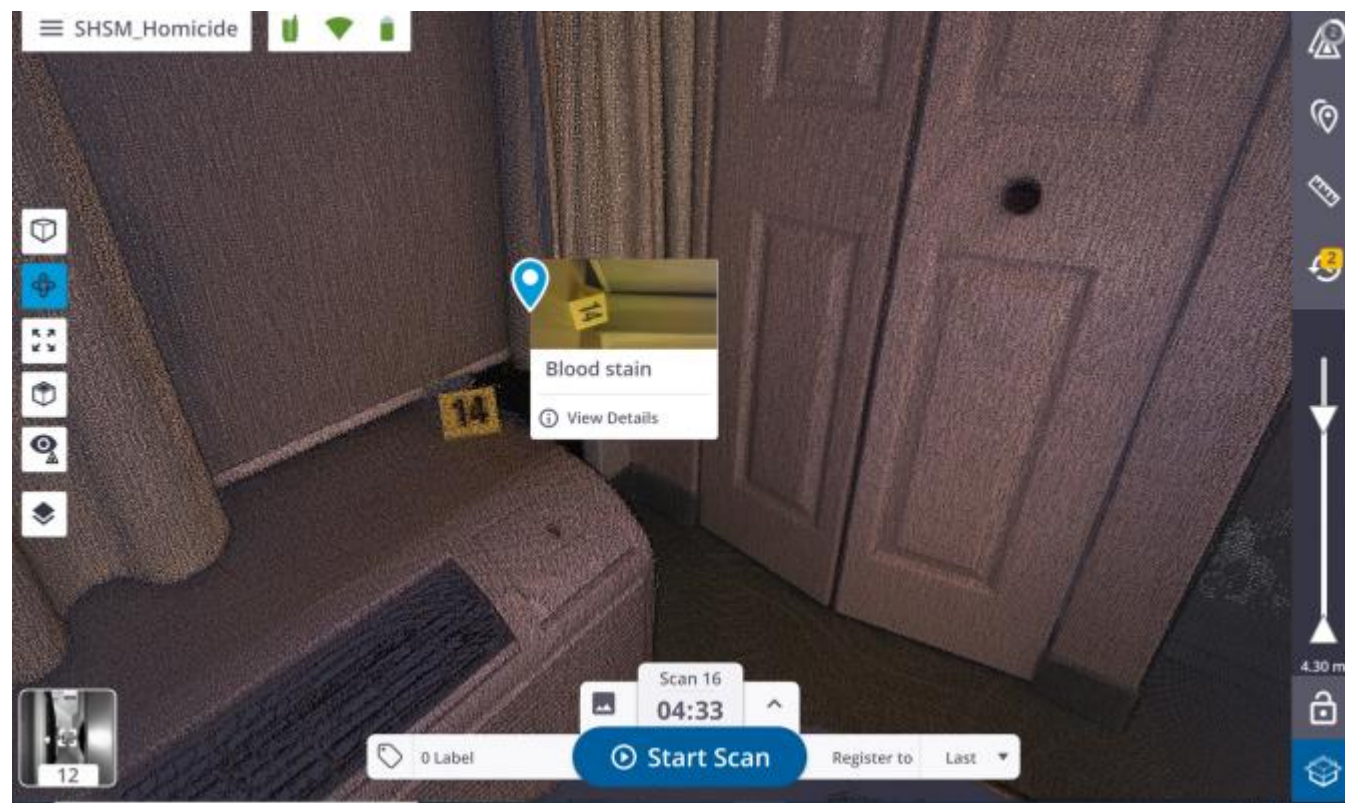
Dennis Rader

# DATA VISUALIZATION IN CRIME SCENE









## POLICE LINEUP

Ivan Henry, who spent 27 years  
in prison

...and a very poorly conducted lineup

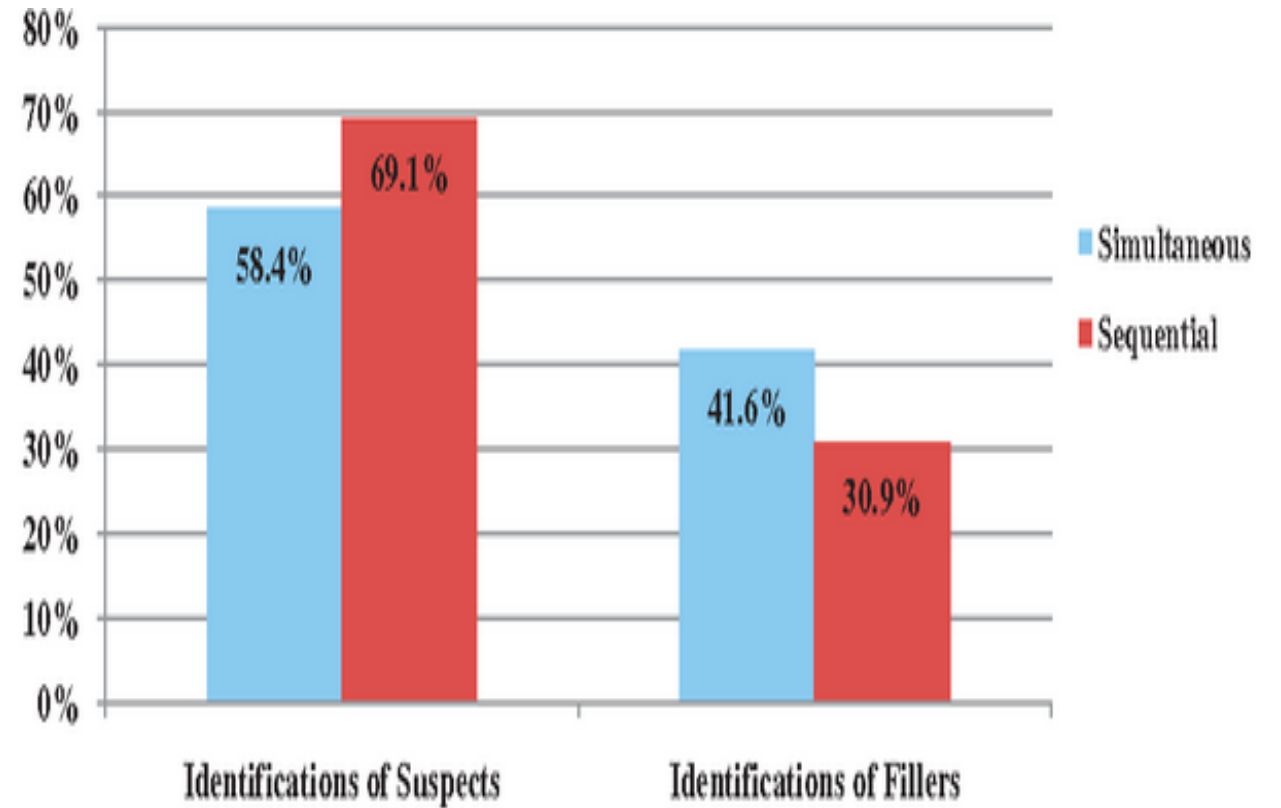
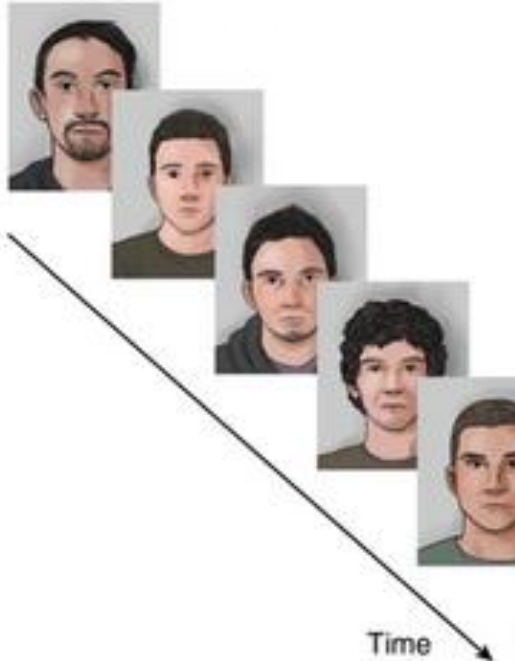


# HOW RELIABLE ARE POLICE LINEUPS? A DATA VISUALIZATION APPROACH

**a** Simultaneous



**b** Sequential



Wells, G. L., Steblay, N. K., & Dysart, J. E. (2011). A test of the simultaneous vs. sequential lineup methods. Des Moines, IA: American Judicature Society.



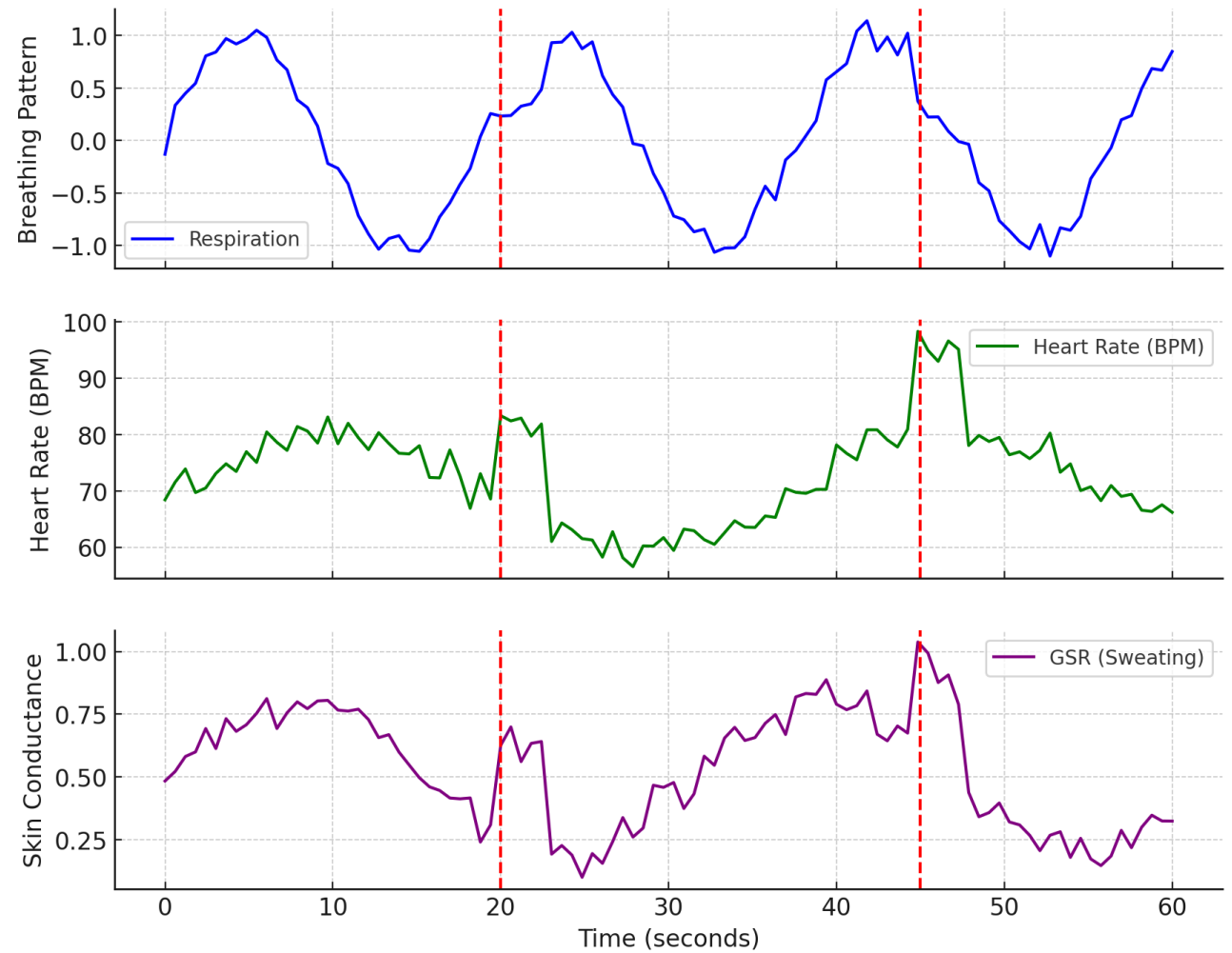
# POLYGRAPH



- Deception detection at 20s and 45s due to physiological changes.
- Indicators of stress response: Increased heart rate, decreased breathing depth, higher skin conductance



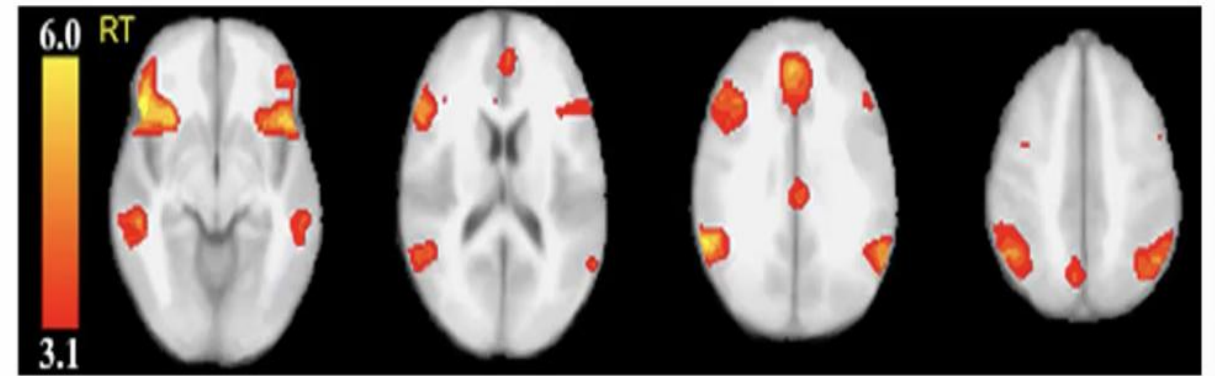
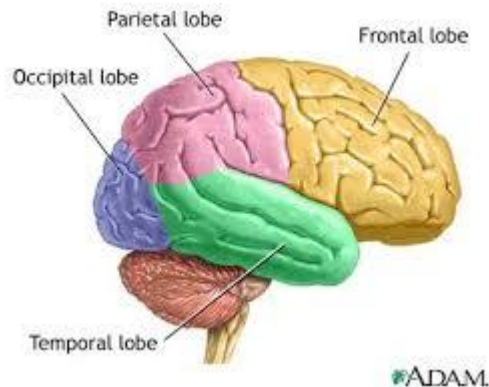
Polygraph Chart Example: Detecting Deception



# FMRI VS. POLYGRAPH: A BETTER WAY TO DETECT LIES?

Can we find a lie in the brain?

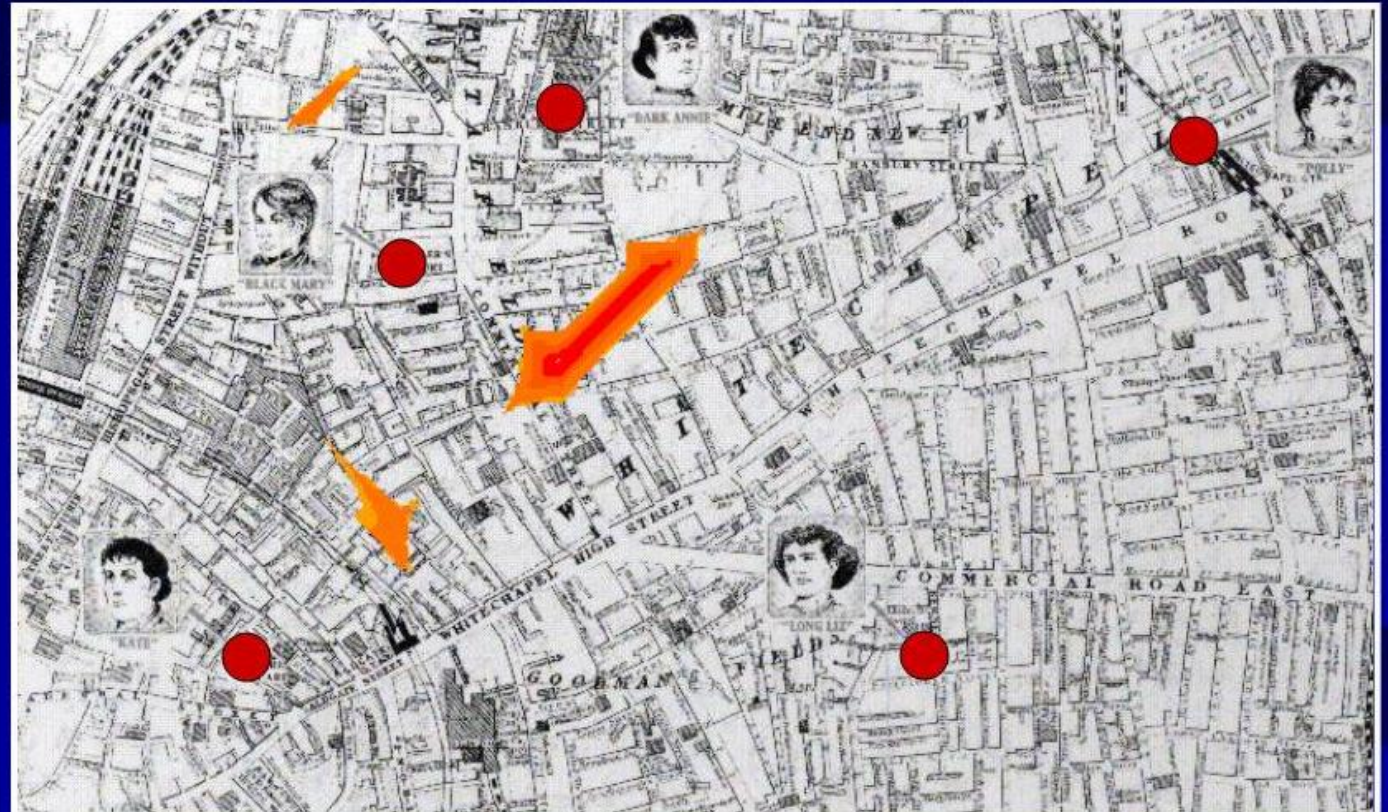
- Brain regions are activated when we lie:
  - Prefrontal cortex & parietal cortex



Langleben, D. D., Loughead, J. W., Bilker, W. B., Ruparel, K., Childress, A. R., Busch, S. I., & Gur, R. C. (2016). Polygraphy and functional magnetic resonance imaging in lie detection: A controlled blind comparison using the concealed information test. *The Journal of Clinical Psychiatry*, 77(10), 1372-1380.

# GEOGRAPHIC PROFILING & DATA VISUALIZATION

## Jack the Ripper





## Dr. Kim Rossmo

- Joined Vancouver Police Department in 1978
- Developed geographic profiling: crime analysis software Rigel
- His analysis in 1998 suggested a serial killer was targeting missing sex workers, later confirmed with Robert Pickton's arrest (2002).

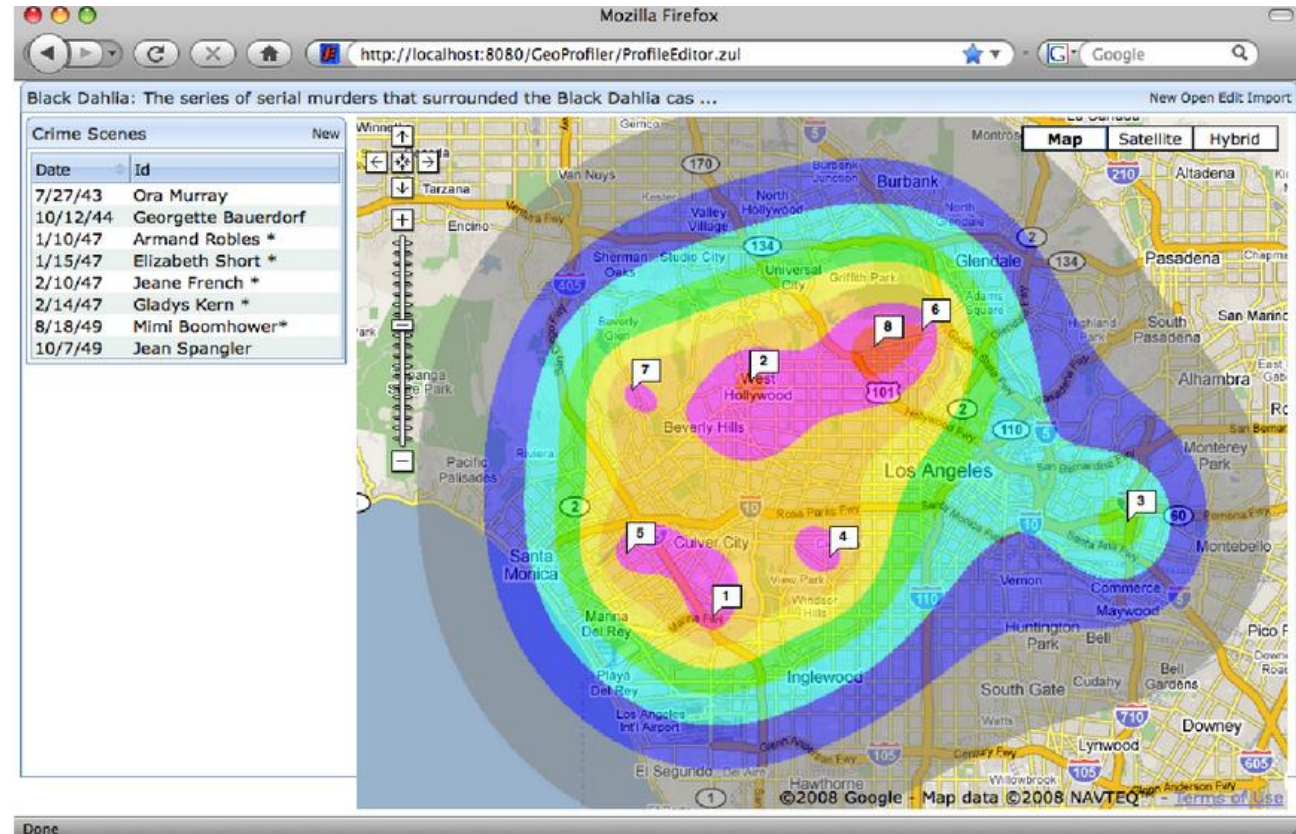


Professor: School of Criminal  
Justice & Criminology, Texas  
State University



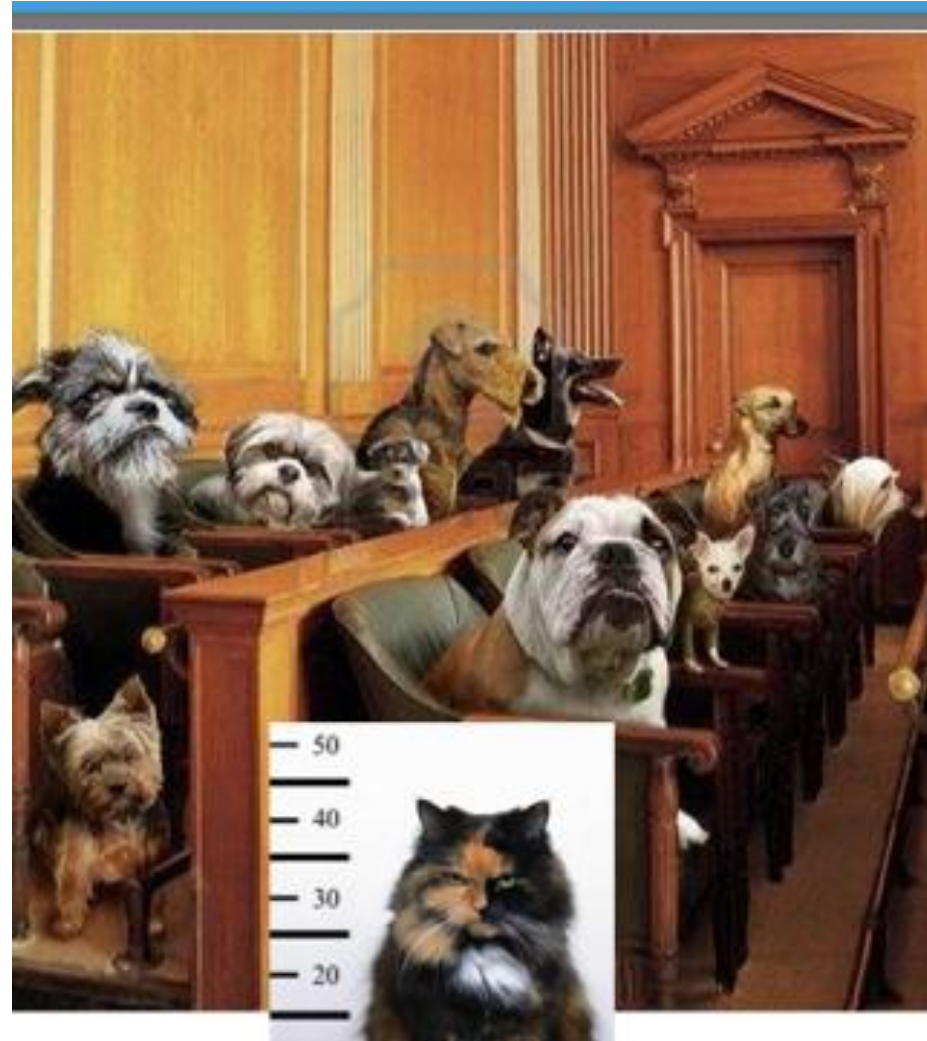
# HOW GEOGRAPHIC PROFILING SOFTWARE WORKS

- A minimum of 5 crime sites is needed for accurate analysis.
- 3D heatmap
- Highlights areas where the offender most likely lives and works
- New crime data updates the system dynamically, improving accuracy





# ENHANCING JUSTICE THROUGH EFFECTIVE DATA VISUALIZATION



## Same charge, different treatment

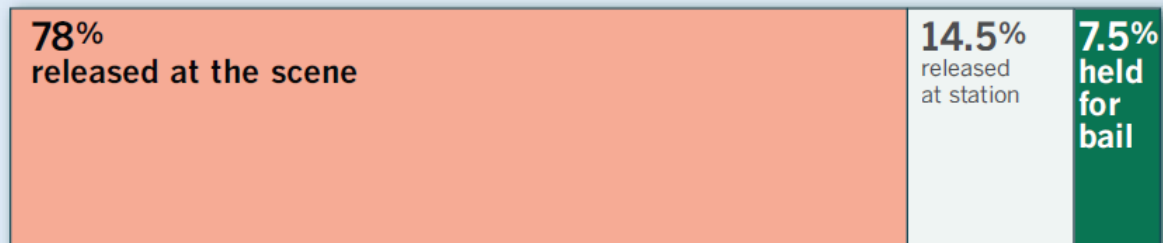
Statistical analysis of single drug possession charges shows that blacks are much less likely to be released at the scene and much more likely to be held in custody for a bail hearing. Darker colours represent a stronger statistical link between skin colour and police treatment.

Degree of likelihood

- *Much less* likely to occur
- *Much more* likely to occur
- *More likely* to occur

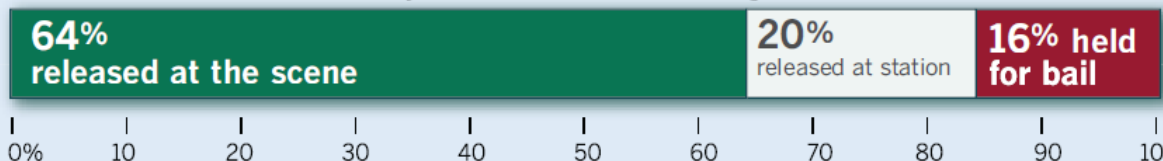
**Whites** are more likely to be released at the scene

6,662  
charges  
laid



**Blacks** are much more likely to be held for bail hearings

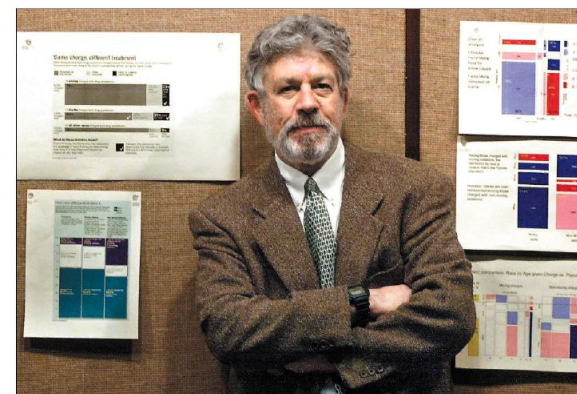
2,446  
charges  
laid



SOURCE: Toronto police arrest records 1996-2002

B SECTION **TORONTO STAR** WEDNESDAY, DECEMBER 11, 2002 thestar.com

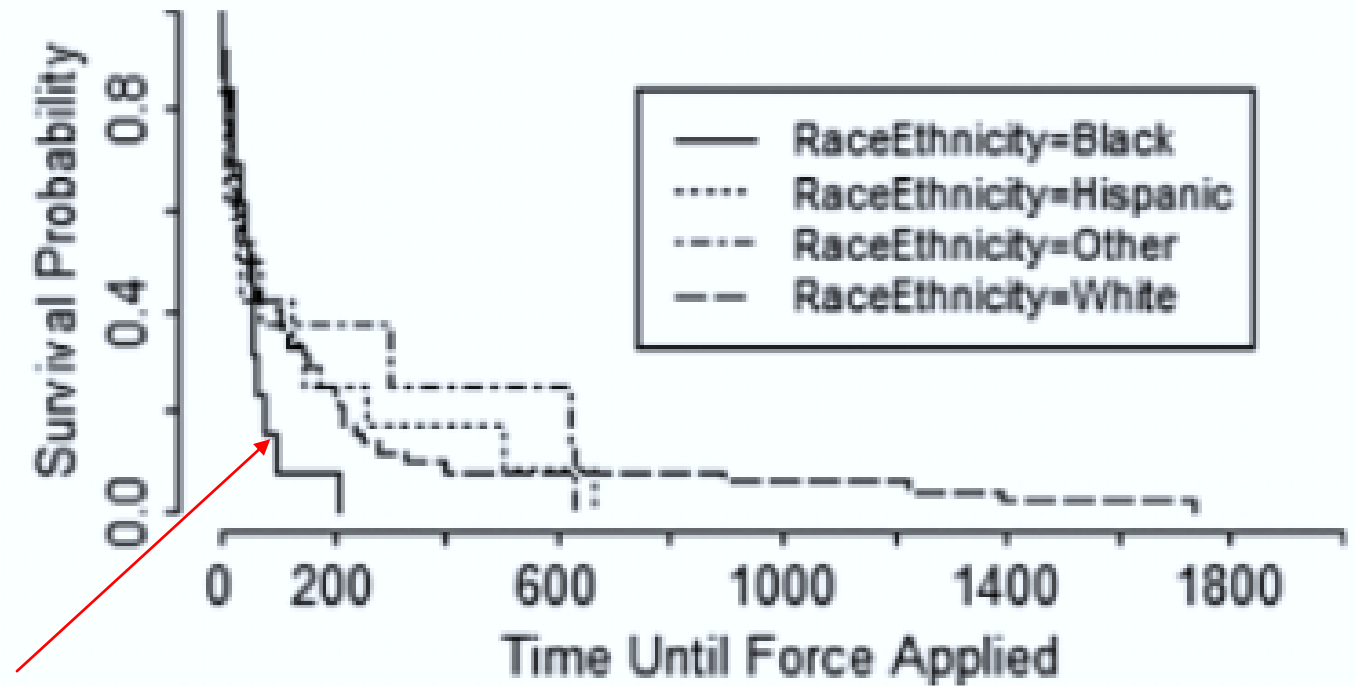
*Race and Crime*



York University professor Michael Friendly's expert statistical analysis provided confirmation for the Toronto Star's series on racial profiling by city police.

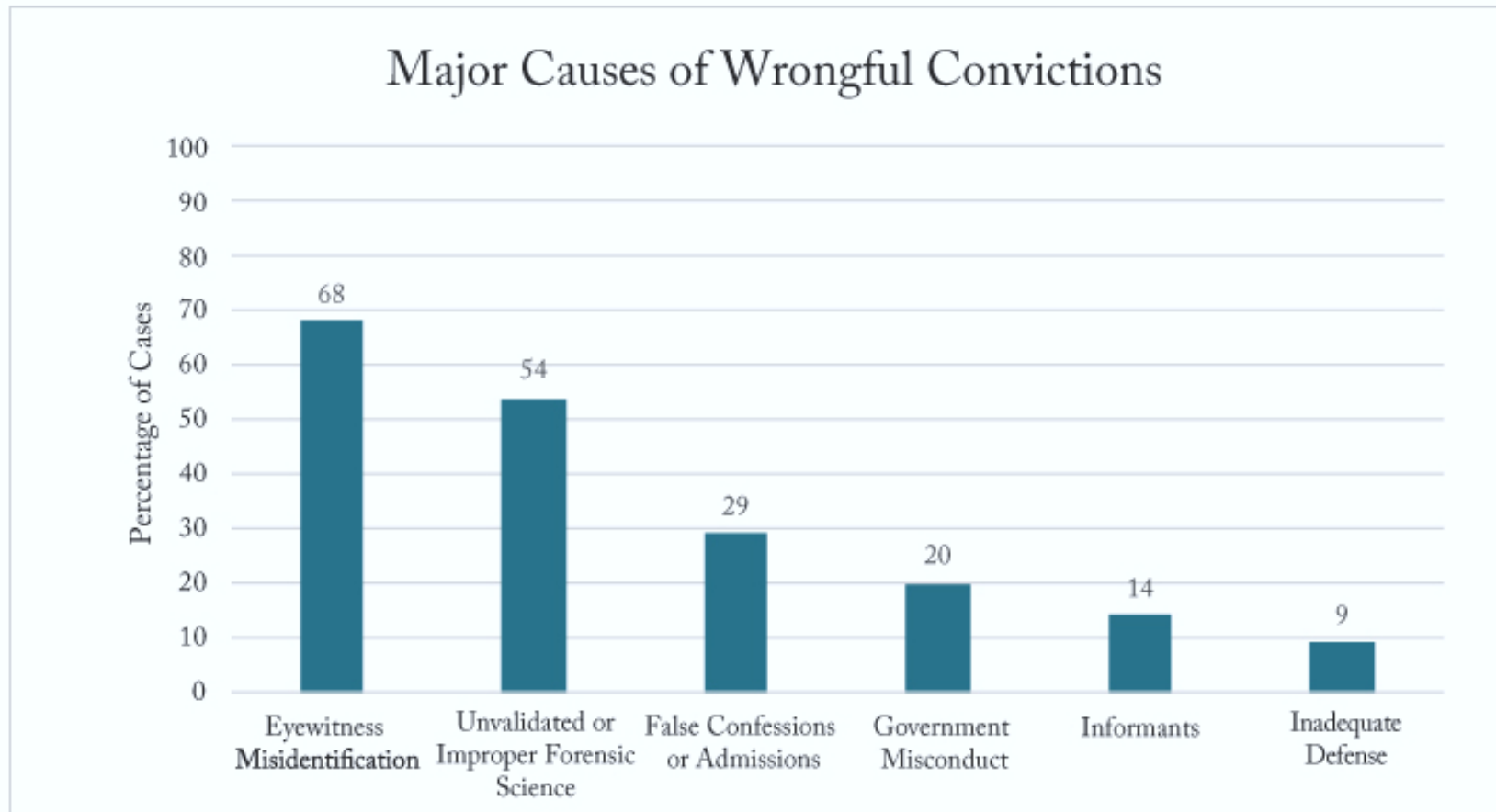
## Man behind the numbers

Analyzed Body-Worn Camera footage  
using data visualization



Willits, D.W., & Makin, D.A. (2018). Show me what happened: Analyzing use of force through analysis of body-worn camera footage. *Journal of research in crime and delinquency*, 55(1), 51-77.

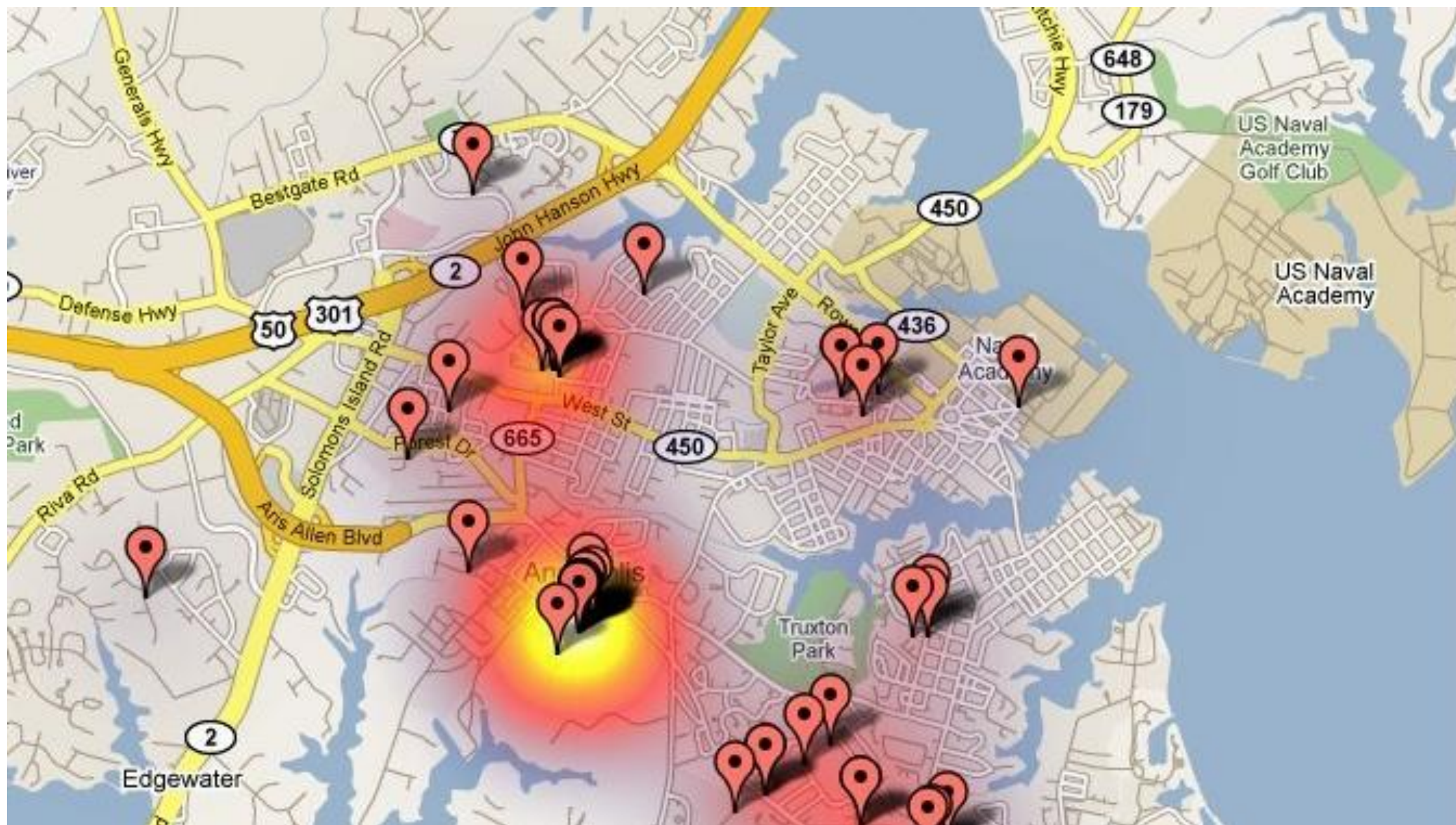
# VISUALIZING THE CAUSES OF WRONGFUL CONVICTIONS



# USING DATA VISUALIZATION TO ANALYZE CRIME PATTERNS: TIME & LOCATION



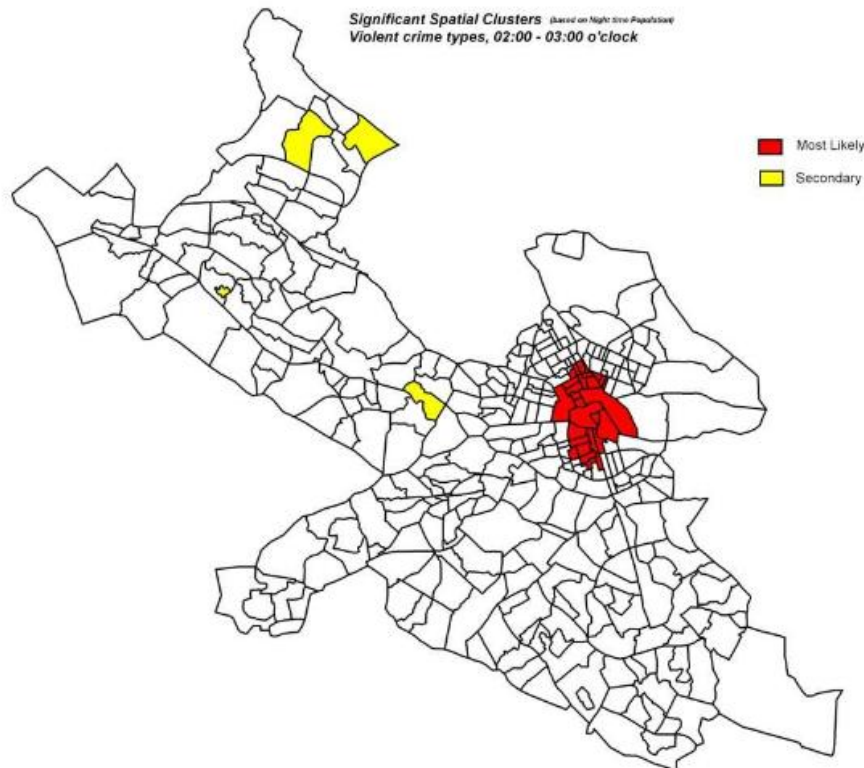




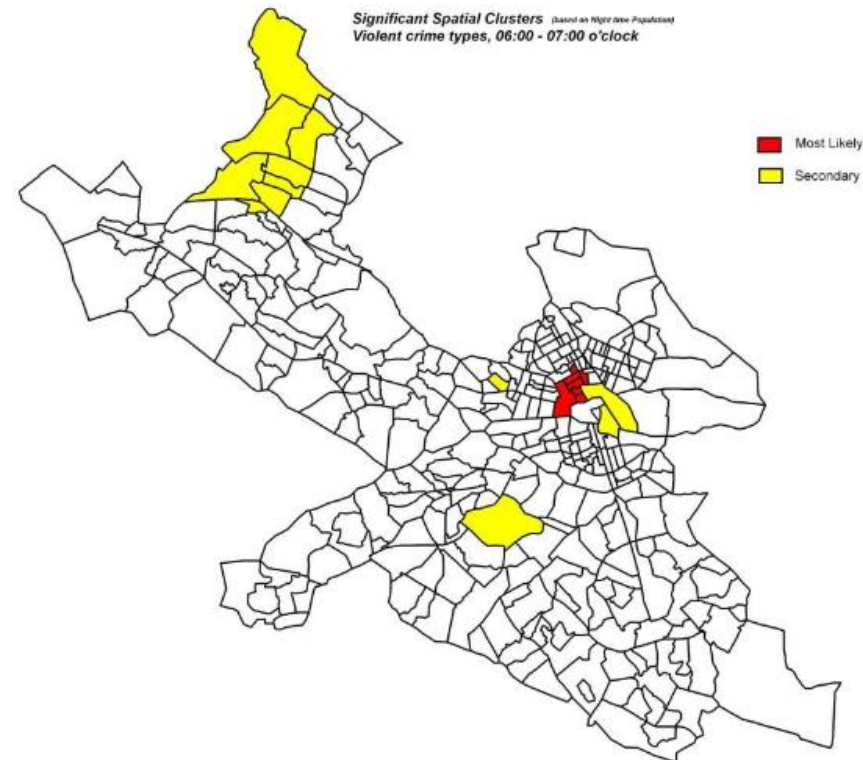


# SPACE-TIME CLUSTERS OF CRIME IN STOCKHOLM, SWEDEN

2am (Peak frequency)

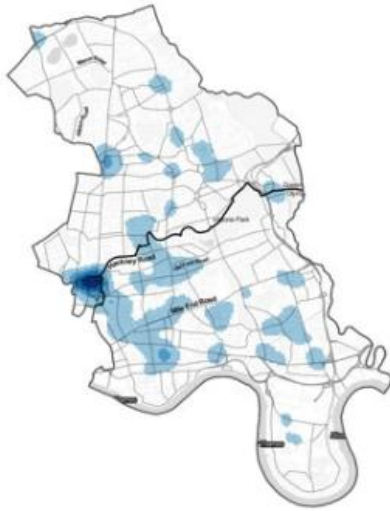


6am (Lowest frequency)



# HOT SPOTS OF VIOLENCE IN LONDON USING DIFFERENT DATA SOURCES

Police



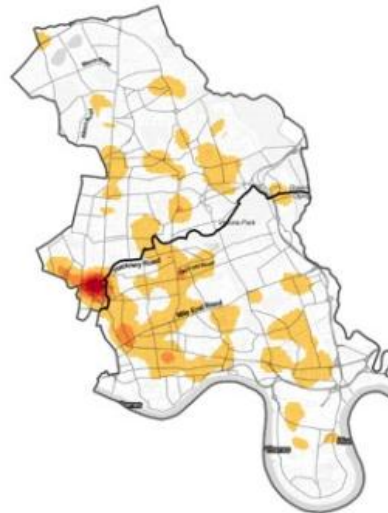
Ambulance



Emergency  
Department



Combined



VISUALIZING CRIME IN  
CANADA: FRASER  
INSTITUTE VS TORONTO  
POLICE



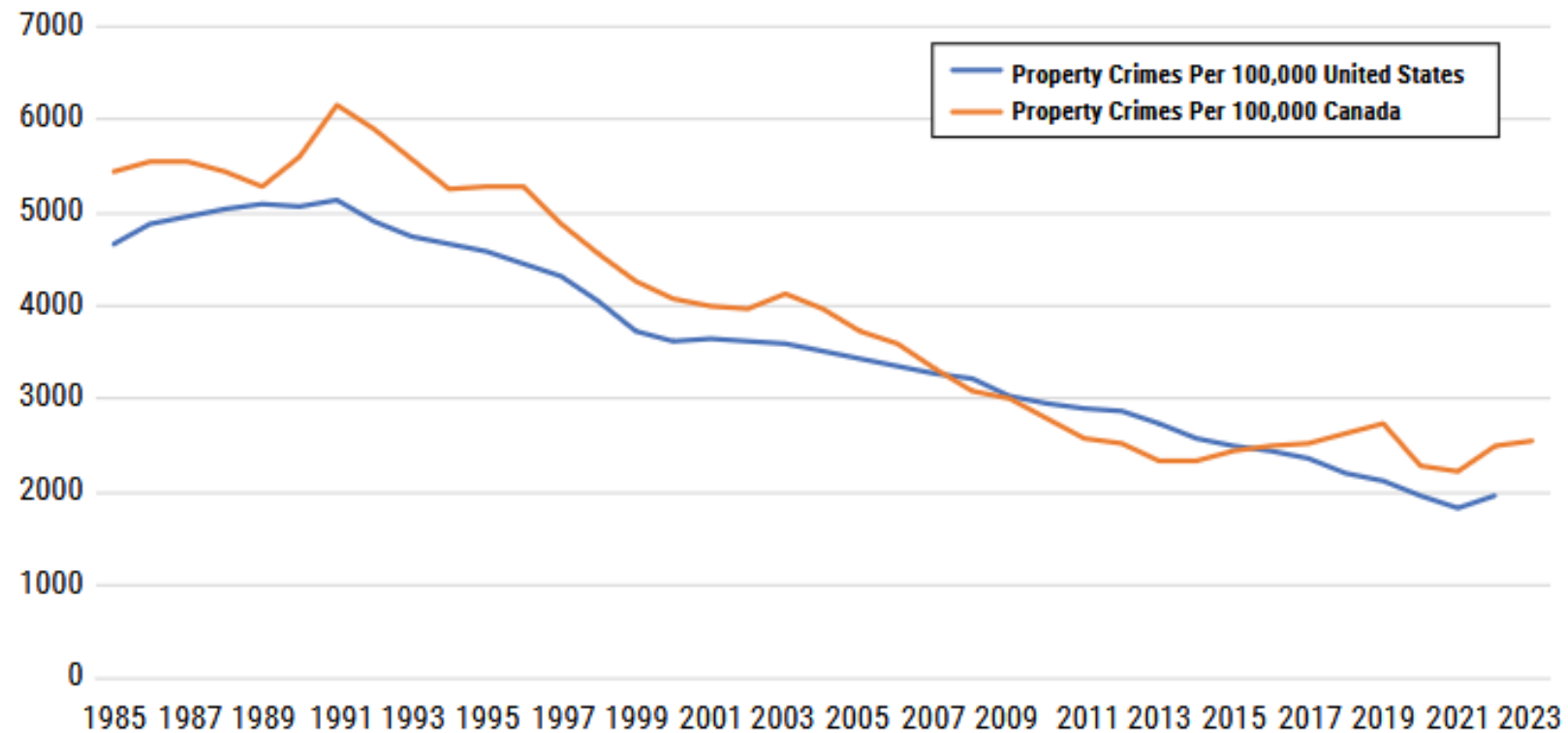
# HOW RESEARCHERS INTERPRET CRIME DATA

March 18, 2025



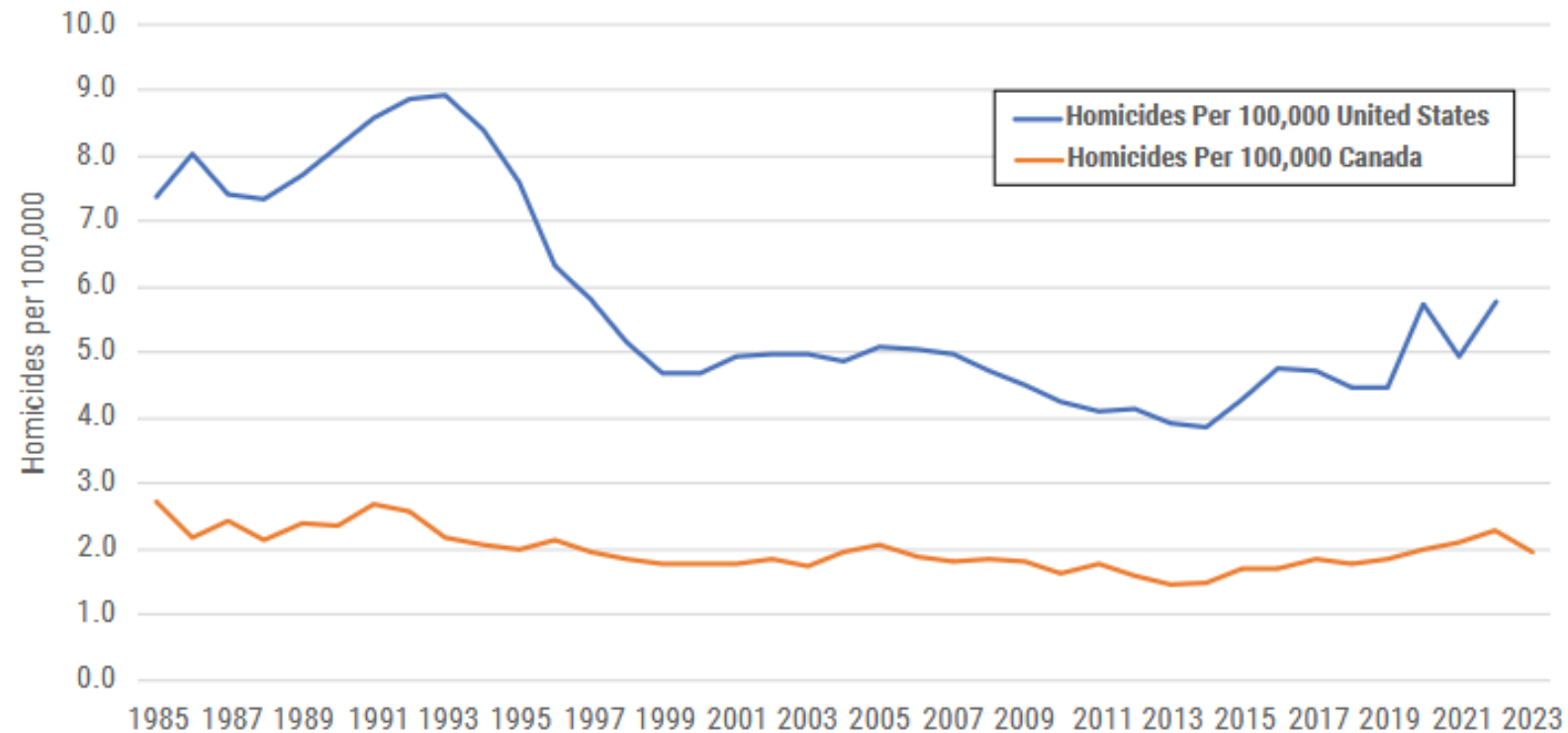
Di Matteo, L. (2024). Comparing Recent Crime Trends in Canada and the United States: An Introduction.

**Figure 2: Property Crimes Per 100,000 Population, Canada vs the United States, 1985–2023**



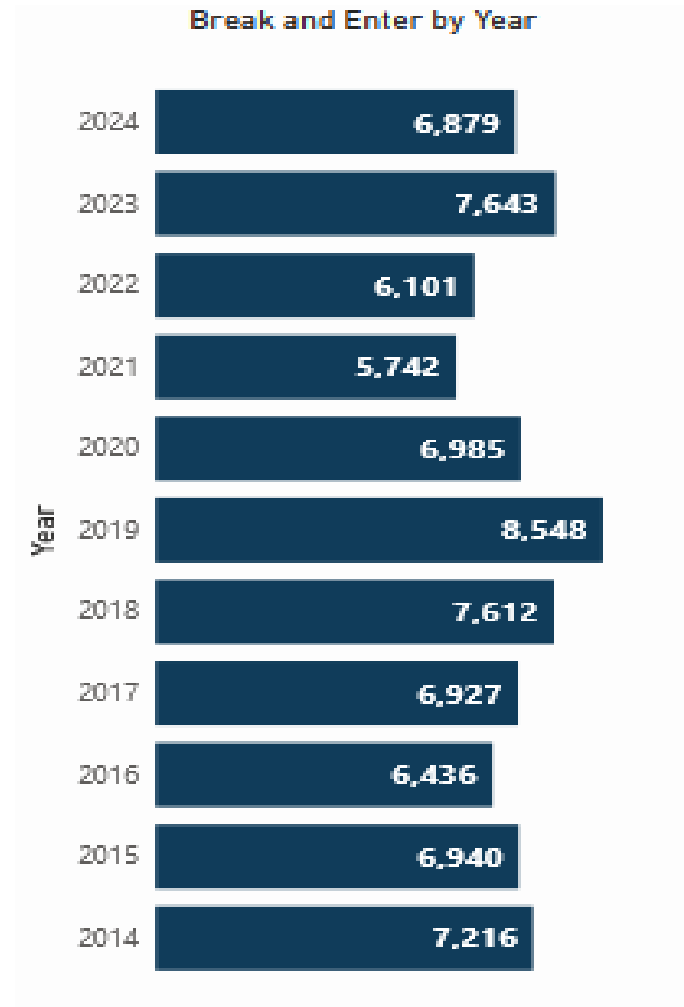


**Figure 1: Homicides Per 100,000 Population, Canada Versus the United States, 1985–2023**



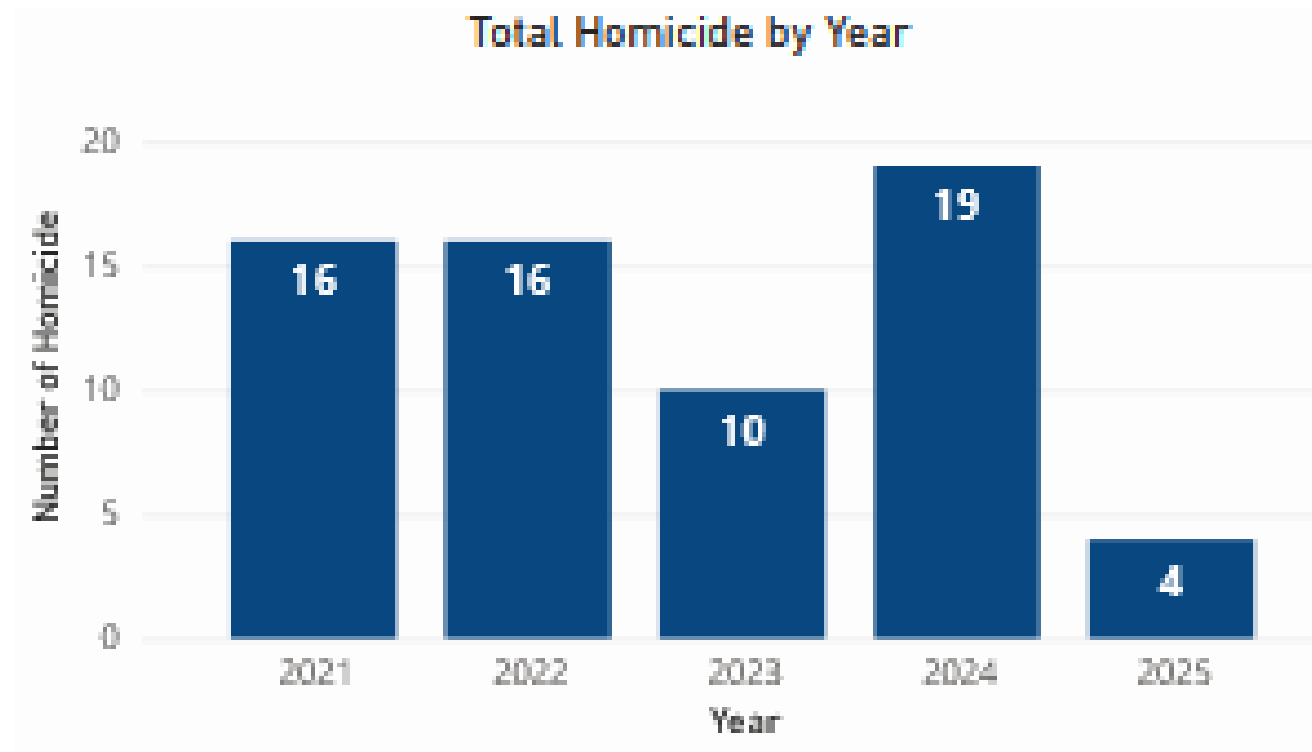


# VISUALIZING UNCERTAINTY: POLICE DATA



[HTTPS://TORONTOPS.MAPS.ARCGIS.COM/APPS/DASH  
BOARDS/F3C005F9ACFF45F1881437F9269EEDB8](https://torontops.maps.arcgis.com/apps/dashboards/F3C005F9ACFF45F1881437F9269EEDB8)

# VISUALIZING UNCERTAINTY: POLICE DATA



---

# SUMMARY:THE POWER OF DATA VISUALIZATION IN CRIME

- Data visualization makes complex crime data easier to understand.
- It helps identify patterns in time, location, and offender behavior.
- Supports law enforcement, policymakers, and the public in making better decisions.
- Plays a key role in creating a fairer and more effective justice system.



THANK YOU!